

CST Studio Suite 2020

Student Edition

Installation Instructions



3DEXPERIENCE®

Table of contents

1. Product Features and Restrictions	3
2. Installation	3
2.1. Hardware Requirements	3
2.2. Software Requirements.....	3
2.3. Before the Installation	3
2.4. Installation Instructions for Microsoft Windows	4
Step 1.....	4
Step 2.....	8

1. Product Features and Restrictions

- The following solvers are available: Time domain, Frequency domain, Low frequency (FD only), Static and Thermal
- Mesh sizes up to 100 000 hexahedrons and 20 000 2nd order tetrahedrons are supported.
- Models can have up to 500 CAD faces
- Periodic and unit cell boundaries are not supported
- The Circuit Simulator is not included
- The file format of the CST Studio Suite® - Student Edition and the CST Studio Suite® full version is not interchangeable and files from the one version cannot be read by the other version
- No distributed computing, MPI or GPU functionality is supported
- No CAD import/export, no copy to full edition
- No optimization
- No editing of history blocks
- No VBA macro editor included
- No command line start, no job control center
- Only Windows OS supported

2. Installation

2.1. Hardware Requirements

- IBM PC compatible CPU (Intel Xeon processor strongly recommended)
- OpenGL compatible graphics hardware
- 4 GB RAM
- 30 GB free disk space

2.2. Software Requirements

The software runs under Windows 7 (SP 1 or later), Windows 2008 Server R2 (SP 1 or later), Windows 8.1, Windows 2012 Server R2, Windows 10 and Windows Server 2016.

2.3. Before the Installation

- You will normally need administrator privileges in order to install the software. If you do not have these privileges on your local computer, ask your system administrator

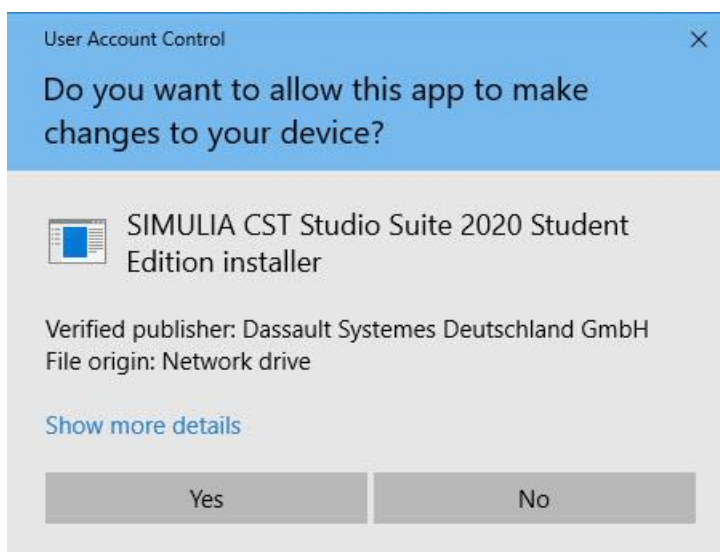
for assistance. Once the software is successfully installed and running, you should close it and log back in as a standard user for security reasons.

- The first time you run the CST Studio Suite Student Edition, you need to have an active internet connection. This is necessary such that the software can automatically retrieve a license. Once the license has been retrieved, it is not necessary anymore to have an internet connection.
- The CST Studio Suite Student Edition will not run on a virtual machine.
- The CST Studio Suite Student Edition cannot be installed on the same computer on which the commercial version of the CST Studio Suite has been installed.

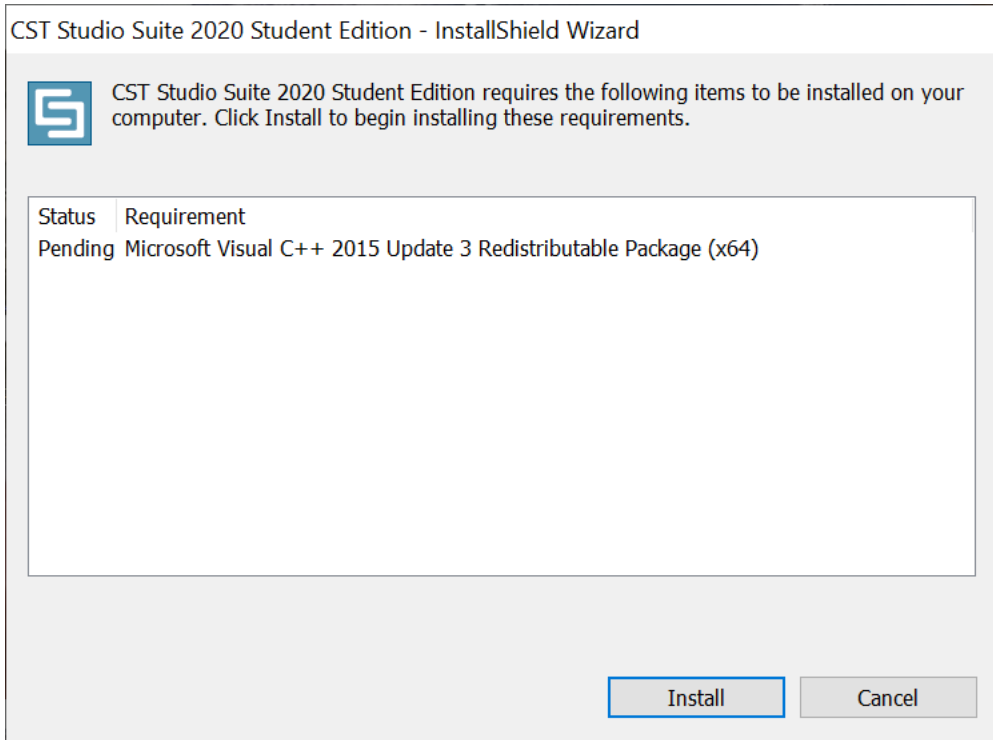
2.4. Installation Instructions for Microsoft Windows

Step 1

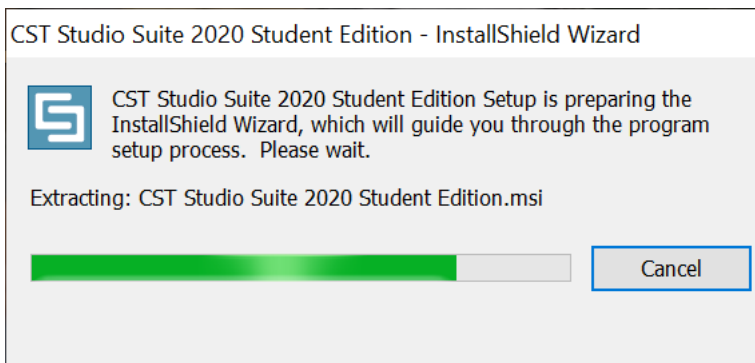
If you have downloaded an installation package, the installer does not start automatically. You can run the installer by double-clicking Setup.exe file in the root folder of the installation package. This will show the following screen:

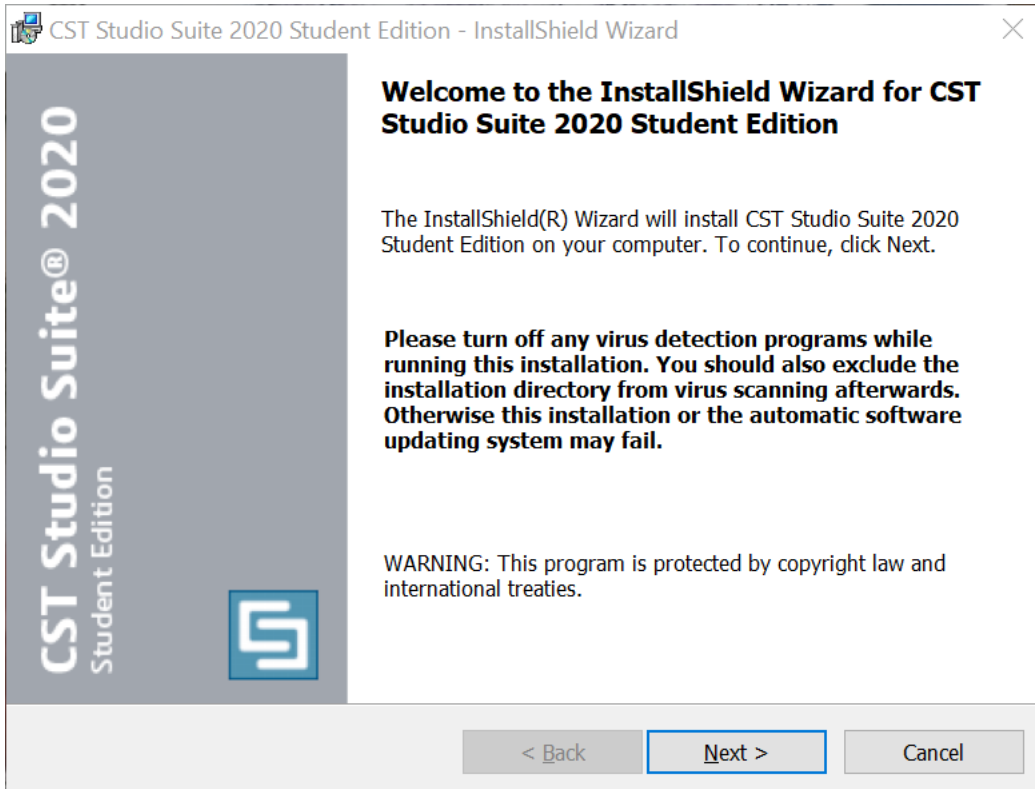


Select "yes". The installation wizard will be prepared to guide you through the installation process. Depending on the current system configuration, the next step will be to install some modules required by the CST Studio Suite software:

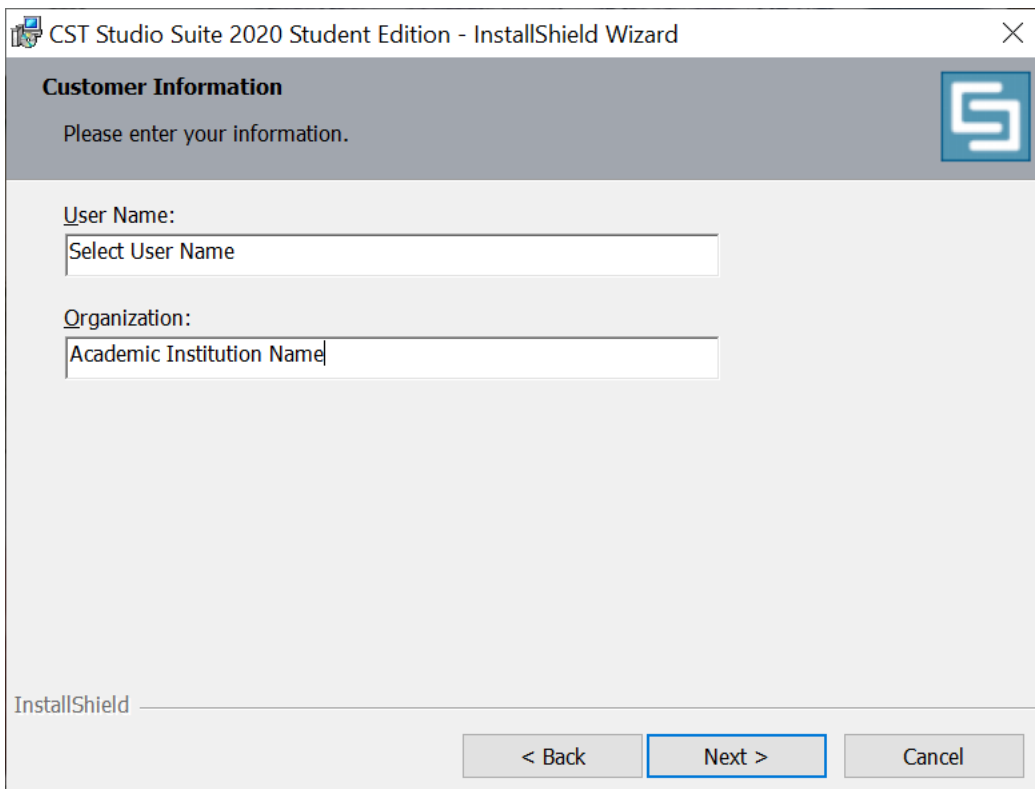


If some or all of these requirements were previously installed, then either some modules or even the entire dialog box may be skipped. Please press the Install button here to proceed to the actual software installation, which will then show the following screen,

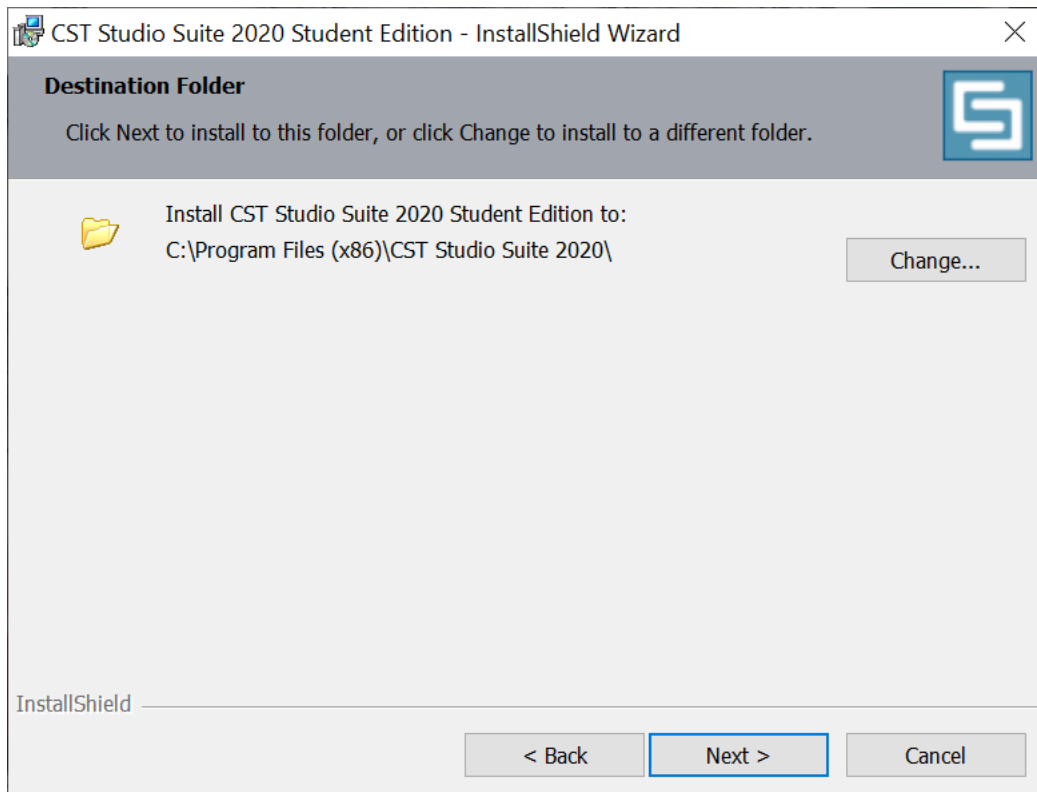




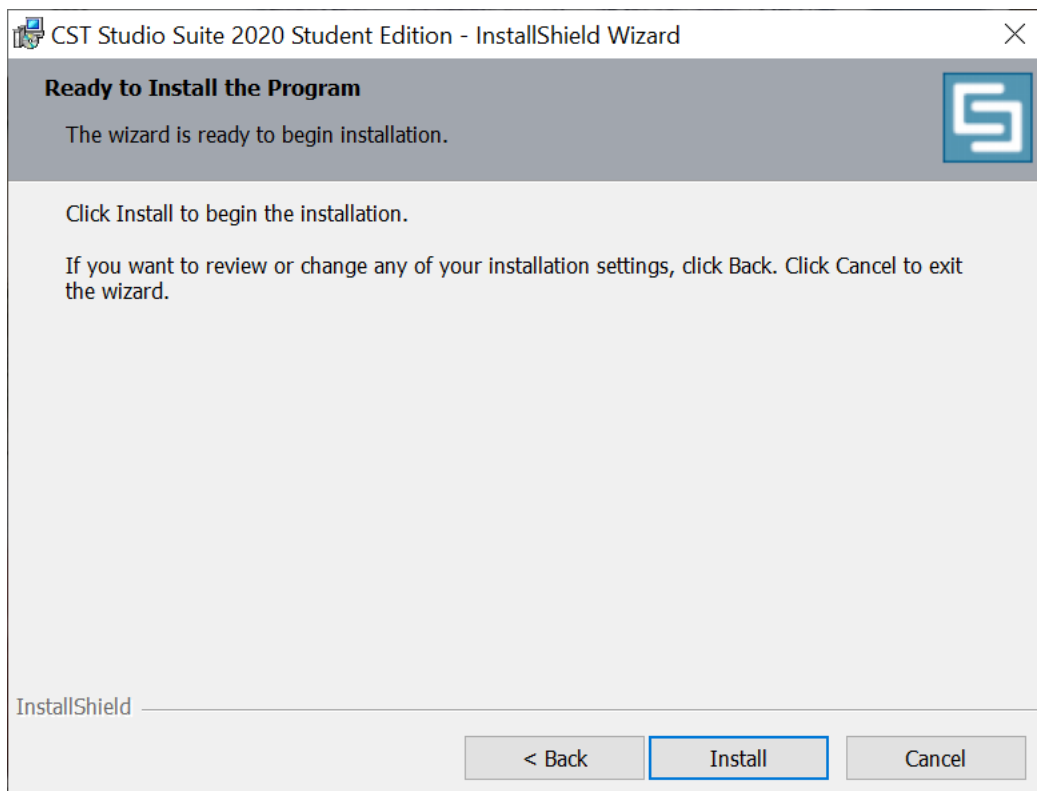
Select "Next"



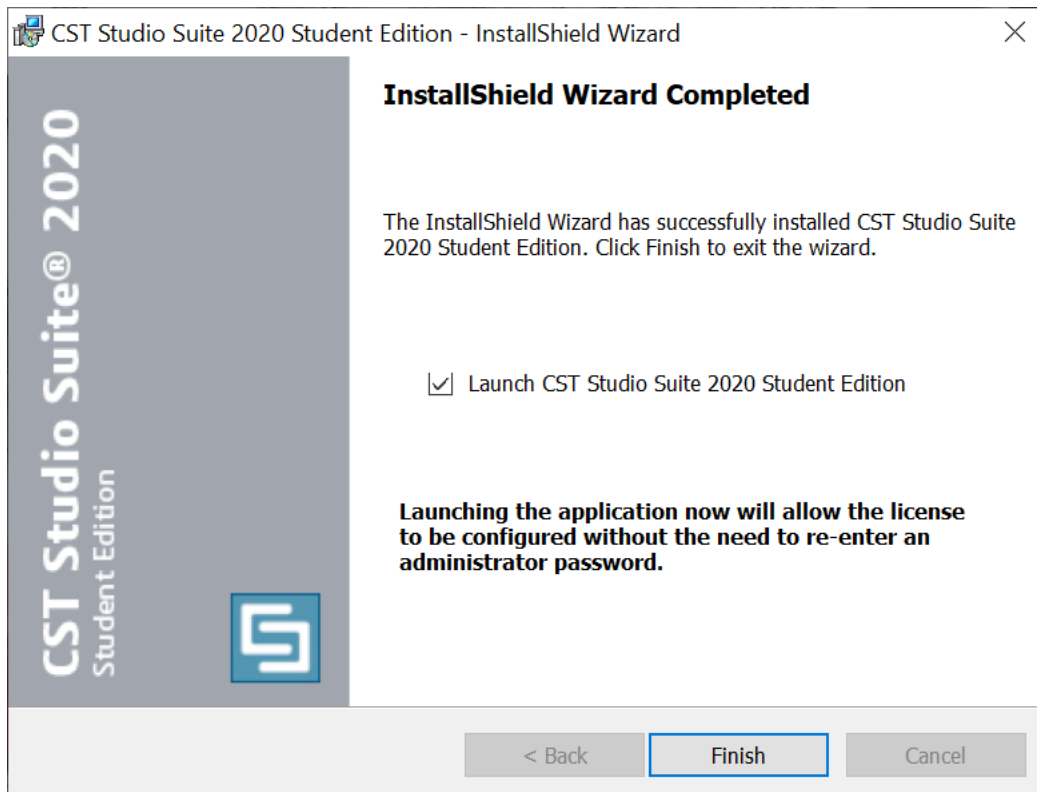
Add your User Name, Organization and click on "Next"



Choose an installation folder, or accept the default. Click on “Next”.



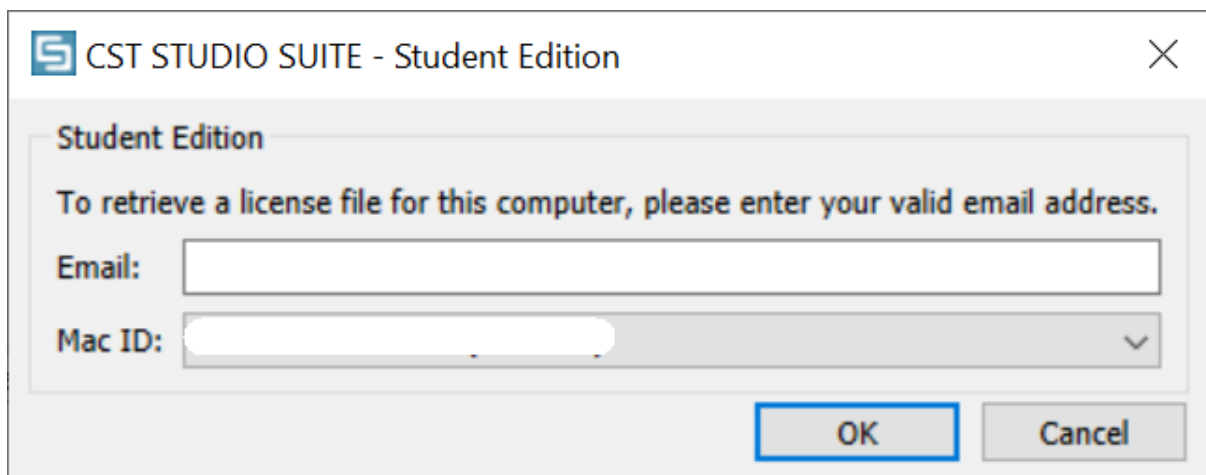
Click on “Install”, to start the installation process.



Click “Finish” when the installation has completed.

Step 2

When you launch the CST Studio Suite Student Edition for the first time, be sure to have an active internet connection. The following window will pop up:



Please enter any email address. The Mac ID will automatically be selected and will be used in the automatic license retrieval process. Click “OK”.

You are now ready to start using the software.